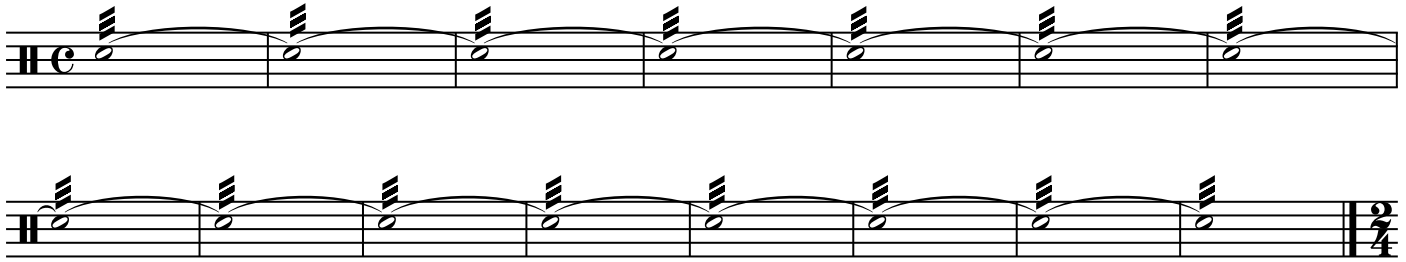


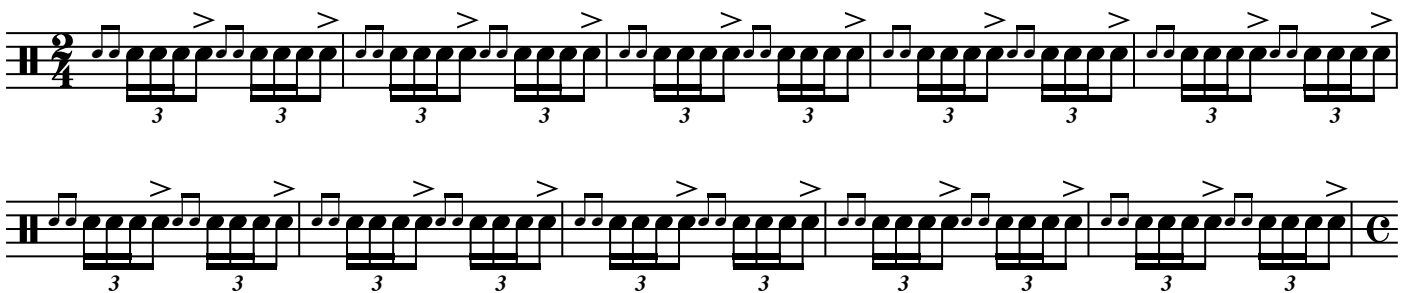
WIBC Snare Drum Audition

#1 Play long roll open to closed to open in 1 minute

Moderato



#2 Play single ratamacue (below) open to closed to open (play rudiment as many times as needed)



#3 Play the etude below at a moderato tempo

Moderato



#4 Answer the following questions when you upload your mp3 (put in special notes box at time of upload)

- What is your secondary instrument strength (timpani or mallet percussion)?
- Do you feel comfortable tuning timpani by yourself?
- Can you play the piano (none, beginner, intermediate, advanced)?