



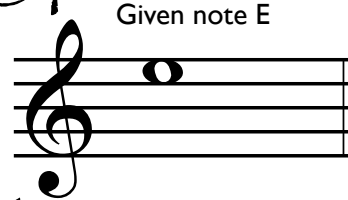
# Overtone Series

## Worksheet (Preferred Fingering)

Review of the three rules

### Choosing preferred fingering

Trumpet



- Least number of valves

The diagram shows a musical staff with seven measures, each representing a different note. Above each note is a green box containing the preferred fingering. Below the staff are the corresponding fingering notations.

Note	Preferred Fingering
OPEN	OPEN
B2	2
Bb2	1
A2	12 or 3
Ab2	23
G2	13
F2	#123



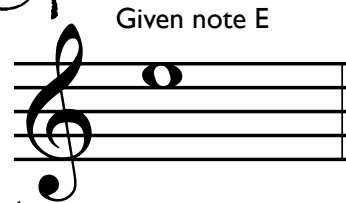
# Overtone Series

## Worksheet (Preferred Fingering)

### Review of the three rules

## Choosing preferred fingering

Trumpet



- Least number of valves,
- Unless it involves 3rd valve

Note	Fingering
OPEN	OPEN
B2	2
C3	1
D3	<del>12 or 3</del>
E3	123
F3	23
G3	13
A3	#123



# Overtone Series

## Worksheet (Preferred Fingering)

Review of the three rules and the preferred fingering

### Choosing preferred fingering

Trumpet

Given note E



- Least number of valves,
- Unless it involves 3rd valve,
- Or is the 7th partial

Diagram illustrating the overtone series for the note E on a trumpet, showing preferred fingerings for each partial:

- Partial 1: OPEN (highlighted in green)
- Partial 2: 2
- Partial 3: 1
- Partial 4: ~~12 or 3~~ (crossed out with a red line)
- Partial 5: 23
- Partial 6: 13
- Partial 7: ~~123~~ (crossed out with a red line)



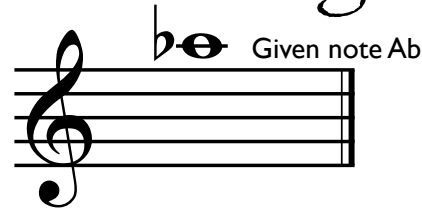
# Overtone Series

## Worksheet (Preferred Fingering)

Look at the three fingering possibilities. Proceed to next page to supply rules and the preferred fingering.

### All possible fingerings

Trumpet



- There are 3 possible fingerings:

1  
23  
123

OPEN 2 1 12 or 3 23 13 123





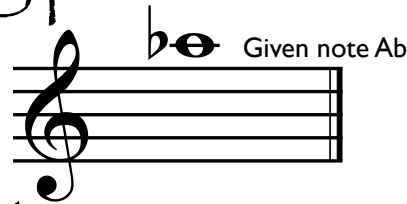
# Overtone Series

## Worksheet (Preferred Fingering) - ANSWERS

Correct answers for rules and the preferred fingering.

### Choosing preferred fingering

Trumpet



- Least number of valves (1st valve)
- Unless it involves 3rd valve (no 3rd valve by itself)
- Or is the 7th partial (1st valve is the 7th partial of a Bb series, so the correct answer is 23)

~~1~~      23      123

OPEN      2      1      12      23      13      123

or 3