



Overtone Series

Worksheet (All Possible Fingerings)

Fill in the blanks to determine all of the possible fingerings (check your work on the answer pages)

All possible fingerings

Given note E



- ◆ Check for given note _____
(Is there an E series below?)
- ◆ Think down Major 3rd, check for series _____
- ◆ Think down Perfect 5th, check for series _____
- ◆ Think down minor 7th, check for series _____

Diagram illustrating various chord voicings for the overtone series of E, showing fingerings for each note:

- OPEN
- 2
- 1
- 12 or 3
- 23
- 13
- #123



Overtone Series

Worksheet (All Possible Fingerings)

Fill in the blanks to determine all of the possible fingerings (check your work on the answer pages)

All possible fingerings

Given note G



- ◆ Check for given note _____
(Is there G series below?)
- ◆ Think down Major 3rd, check for series _____
- ◆ Think down Perfect 5th, check for series _____
- ◆ Think down minor 7th, check for series _____

Diagram illustrating various chord voicings for G in the treble clef and their corresponding fingerings in the bass clef:

- OPEN
- 2
- 1
- 12 or 3
- 23
- 13
- #123



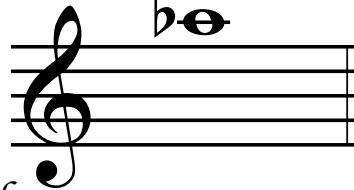
Overtone Series

Worksheet (All Possible Fingerings)

Fill in the blanks to determine all of the possible fingerings (check your work on the answer pages)

All possible fingerings

Given note Ab



- ◆ Check for given note _____
(Is there an Ab series below?)
- ◆ Think down Major 3rd, check for series _____
- ◆ Think down Perfect 5th, check for series _____
- ◆ Think down minor 7th, check for series _____
- ◆ Think down Major 9th, check for series _____

OPEN 2 1 12 23 13 123
or 3



Overtone Series

Worksheet (All Possible Fingerings) - ANSWERS

Correct answers for all possible fingerings

All possible fingerings

Given note E



- ◆ Check for given note E (none)
- ◆ Think down Major 3rd, check for series C (open)
- ◆ Think down Perfect 5th, check for series A (12 or 3)
- ◆ Think down minor 7th, check for series F# (123)

Diagram illustrating the overtone series for the given note E, showing the resulting chords and their fingerings:

- OPEN
- 2
- 1
- 12 or 3
- 23
- 13
- #123



Overtone Series

Worksheet (All Possible Fingerings) - ANSWERS

Correct answers for all possible fingerings

All possible fingerings

Given note G



- ◆ Check for given note G (13)
- ◆ Think down Major 3rd, check for series Eb (none)
- ◆ Think down Perfect 5th, check for series C (open)
- ◆ Think down minor 7th, check for series A (12 or 3)

OPEN 2 1 12 23 13 #123

or 3



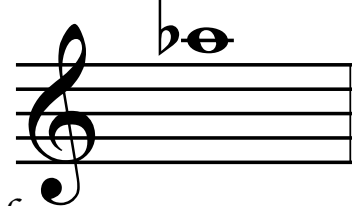
Overtone Series

Worksheet (All Possible Fingerings) - ANSWERS

Correct answers for all possible fingerings

All possible fingerings

Given note Ab



- ◆ Check for given note Ab (23)
- ◆ Think down Major 3rd, check for series Fb or E (none)
- ◆ Think down Perfect 5th, check for series Db (none)
- ◆ Think down minor 7th, check for series Bb (1)
- ◆ Think down Major 9th, check for series Gb (123)

Diagram illustrating the seven possible chord voicings for Ab in the treble clef and their corresponding fingerings in the bass clef:

- Chord 1: Ab (23) - Bass clef: OPEN
- Chord 2: Fb or E (none) - Bass clef: 2
- Chord 3: Db (none) - Bass clef: 1
- Chord 4: Bb (1) - Bass clef: 12 or 3
- Chord 5: Gb (123) - Bass clef: 23
- Chord 6: Gb (123) - Bass clef: 13
- Chord 7: Gb (123) - Bass clef: 123