



**Max McKee**  
Executive Director  
(541) 840-4888



**Scott McKee**  
Managing Director  
(541) 778-4880



**Paul Kassulke**  
Director of Operations  
(541) 778-3161

Visit us @ [www.bandworld.org](http://www.bandworld.org)

Another ABC Presentation

American Band College



# Overtone Series

## Trumpet & Low Brass Relationship

**TRUMPET**

open 2 1 12 or 3 23 13 123

**TROMBONE**

1st 2nd 3rd 4th 5th 6th 7th

**EUPHONIUM**

open 2 1 12 or 3 23 13 or 4 123 or 24

**TUBA**

open 2 1 12 or 3 23 13 or 4 123 or 24

Instrument	1st Note	2nd Note	3rd Note	4th Note	5th Note	6th Note	7th Note
Trumpet	open	2	1	12 or 3	23	13	123
Trombone	1st	2nd	3rd	4th	5th	6th	7th
Euphonium	open	2	1	12 or 3	23	13 or 4	123 or 24
Tuba	open	2	1	12 or 3	23	13 or 4	123 or 24

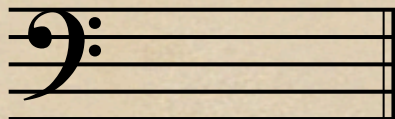
# Overtone Series

ALL POSSIBLE TROMBONE POSITIONS

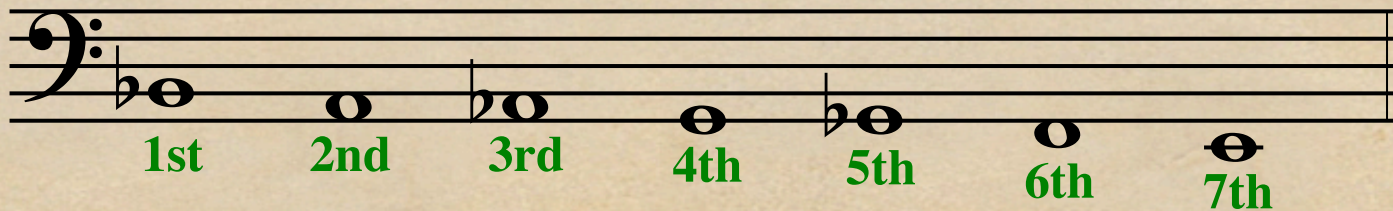
# Overtone Series

All possible positions

Given note D



**TROMBONE**



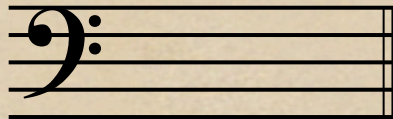
# Overtone Series

All possible positions

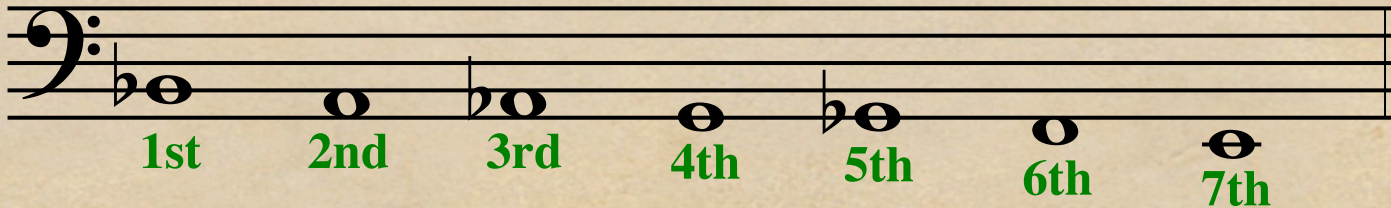
Given note D



- ◆ Check for given note **NONE**



**TROMBONE**



# Overtone Series

All possible positions

Given note D

 MAJOR 3RD

- ◆ Check for given note **NONE**
- ◆ Think down Major 3rd, check for series **1<sup>ST</sup> POSITION**

**TROMBONE**



1st 2nd 3rd 4th 5th 6th 7th

# Overtone Series

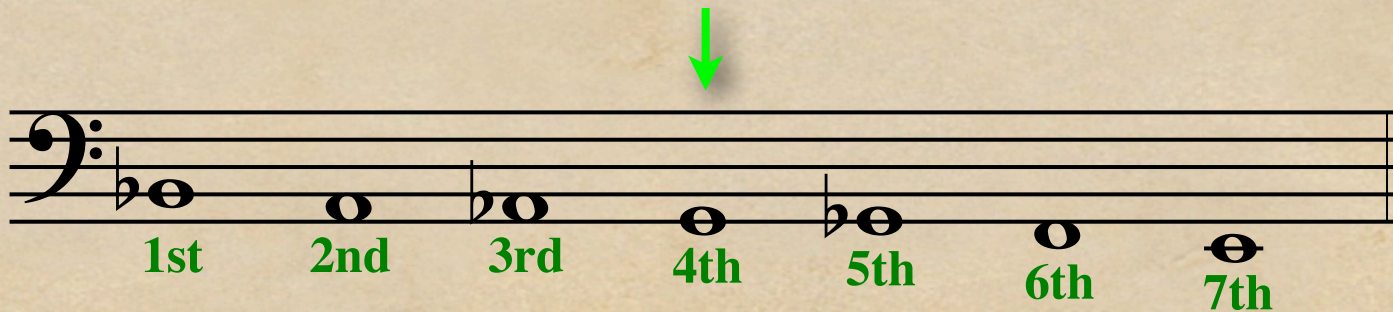
## All possible positions

Given note D



- ◆ Check for given note **NONE**
- ◆ Think down Major 3rd, check for series **1<sup>ST</sup> POSITION**
- ◆ Think down Perfect 5th, check for series **4<sup>TH</sup> POSITION**

**TROMBONE**



# Overtone Series

## All possible positions

Given note D



- ◆ Check for given note **NONE**
- ◆ Think down Major 3rd, check for series **1<sup>ST</sup> POSITION**
- ◆ Think down Perfect 5th, check for series **4<sup>TH</sup> POSITION**
- ◆ Think down minor 7th, check for series **7<sup>TH</sup> POSITION**

**TROMBONE**

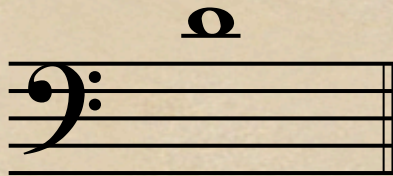




# Overtone Series

All possible positions

Given note D



- ◆ There are 3 possible positions:

**1<sup>ST</sup> POSITION**                      **4<sup>TH</sup> POSITION**                      **7<sup>TH</sup> POSITION**

**TROMBONE**

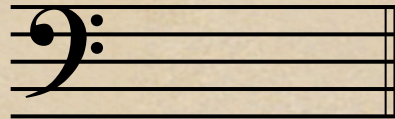
1st    2nd    3rd    4th    5th    6th    7th

The diagram shows a long musical staff with a bass clef and a key signature of one flat (B-flat). The staff is divided into three sections by vertical bar lines. The first section is labeled '1<sup>ST</sup> POSITION' with a green arrow pointing to a note on the second line, labeled '1st'. The second section is labeled '4<sup>TH</sup> POSITION' with a green arrow pointing to a note on the second space, labeled '4th'. The third section is labeled '7<sup>TH</sup> POSITION' with a green arrow pointing to a note on the second space, labeled '7th'. The notes in the first section are: 1st (second line), 2nd (second space), and 3rd (second space). The notes in the second section are: 4th (second space), 5th (second space), and 6th (second space). The notes in the third section are: 7th (second space), 8th (second space), and 9th (second space). The word 'TROMBONE' is written in green capital letters to the left of the staff.

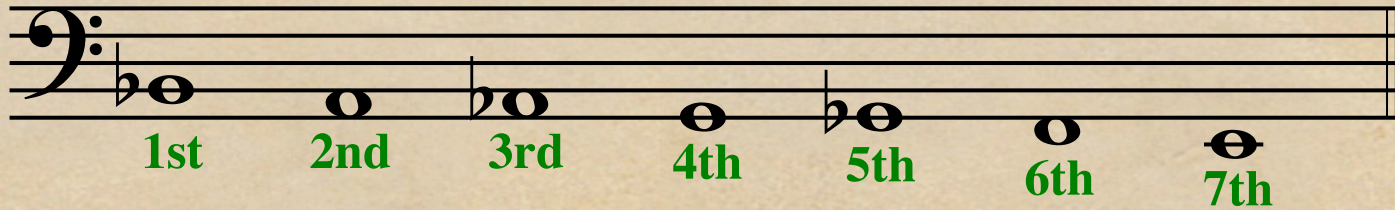
# Overtone Series

All possible positions

Given note G



**TROMBONE**



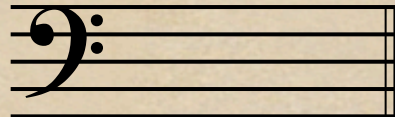
# Overtone Series

All possible positions

Given note G



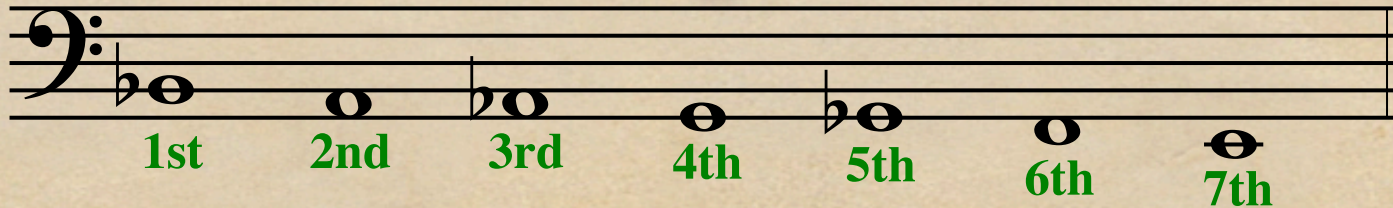
- ◆ Check for given note **4<sup>TH</sup> POSITION**



**4<sup>TH</sup> POSITION**



**TROMBONE**

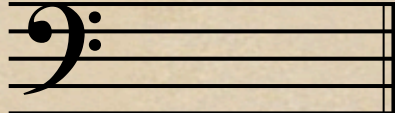


# Overtone Series

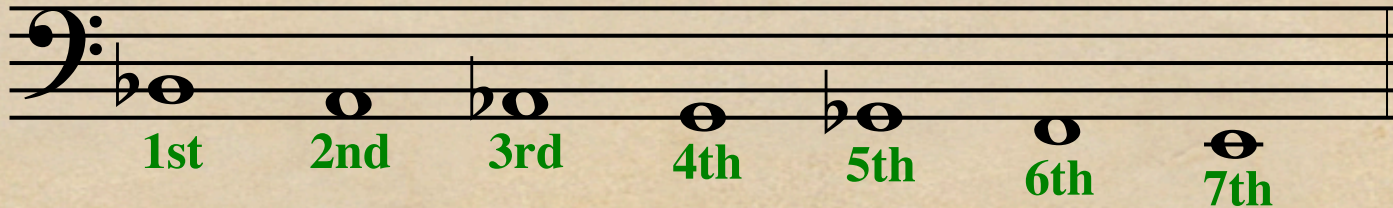
## All possible positions

Given note G



- ◆ Check for given note <sup>4<sup>TH</sup></sup> POSITION 
- ◆ Think down Major 3rd, check for series **NONE**

**TROMBONE**

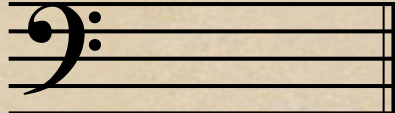


# Overtone Series

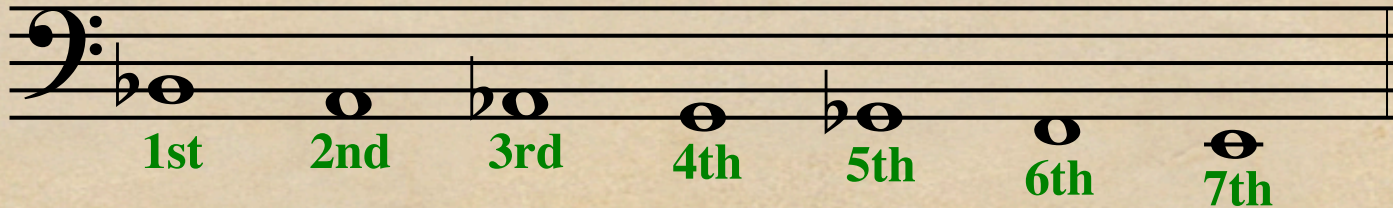
## All possible positions

Given note G



- ◆ Check for given note **4<sup>TH</sup> POSITION** 
- ◆ Think down Major 3rd, check for series **NONE**
- ◆ Think down Perfect 5th, check for series **NONE**

**TROMBONE**



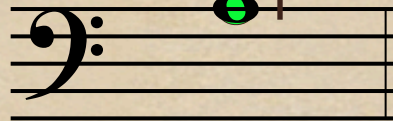
# Overtone Series

## All possible positions

Given note G



◆ Check for given note **4<sup>TH</sup> POSITION**



◆ Think down Major 3rd, check for series

**NONE**

◆ Think down Perfect 5th, check for series

**NONE**

◆ Think down minor 7th, check for series

**2<sup>ND</sup> POSITION**

**TROMBONE**



# Overtone Series

## All possible positions

Given note G



◆ Check for given note **4<sup>TH</sup> POSITION**



◆ Think down Major 3rd, check for series

**NONE**

◆ Think down Perfect 5th, check for series

**NONE**

◆ Think down minor 7th, check for series

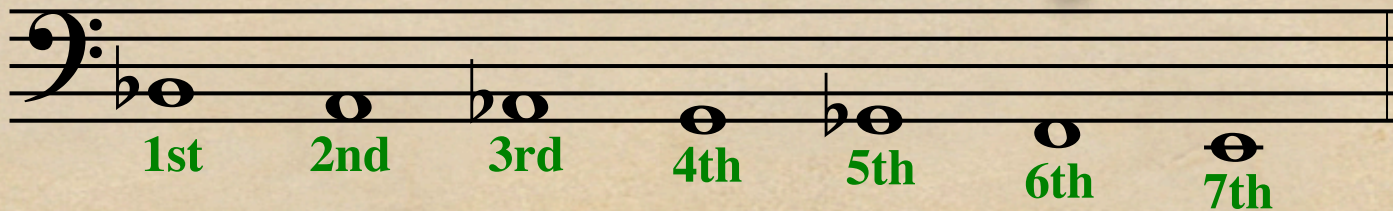
**2<sup>ND</sup> POSITION**

◆ Think down Major 9th, check for series

**6<sup>TH</sup> POSITION**



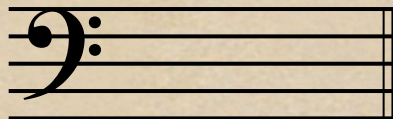
**TROMBONE**



# Overtone Series

All possible positions

Given note G



- ◆ There are 3 possible positions:

**TROMBONE**

2<sup>ND</sup> POSITION      4<sup>TH</sup> POSITION      6<sup>TH</sup> POSITION

1st      2nd      3rd      4th      5th      6th      7th