



**Max McKee**  
Executive Director  
(541) 840-4888



**Scott McKee**  
Managing Director  
(541) 778-4880



**Paul Kassulke**  
Director of Operations  
(541) 778-3161

Visit us @ [www.bandworld.org](http://www.bandworld.org)

Another ABC Presentation

American Band College



# ABC's of the Overtone Series

Trumpet Related to Other Brass

- Trumpet to Euphonium
- Trumpet to Tuba
- Trumpet to F Horn
- Trumpet to Bb Horn
- Trumpet to Trombone

# Overtone Series

B.C. Baritone/Euphonium to Trumpet



**1 OPEN**

Go up Major 9th,  
then think trumpet fingerings

Note: T.C. Baritone fingerings  
are identical to trumpet fingerings.

# Overtone Series

## Tuba to Trumpet



**1**    **OPEN**

Go up two Octaves + Major 2nd,  
then think trumpet fingerings

# Overtone Series

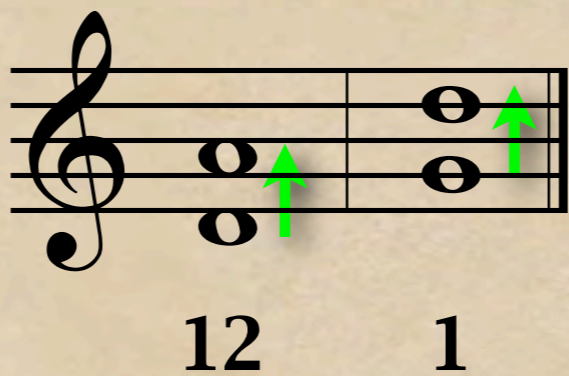
Horn (F side) to Trumpet



Go up Octave,  
then think trumpet fingerings

# Overtone Series

## Horn (Bb side) to Trumpet



Go up perfect 5th,  
then think trumpet fingerings

Note: There are 2 exceptions in preferred Bb horn fingering.  
Second space Ab is fingered 23 and the adjacent A natural  
is fingered 12. The expected fingerings are usable alternates.

# Overtone Series

## Trombone & Trumpet Relationship

**TRUMPET**

**TROMBONE**

Instrument	1st	2nd	3rd	4th	5th	6th	7th
Trumpet	open	2	1	12 or 3	23	13	123
Trombone	1st	2nd	3rd	4th	5th	6th	7th

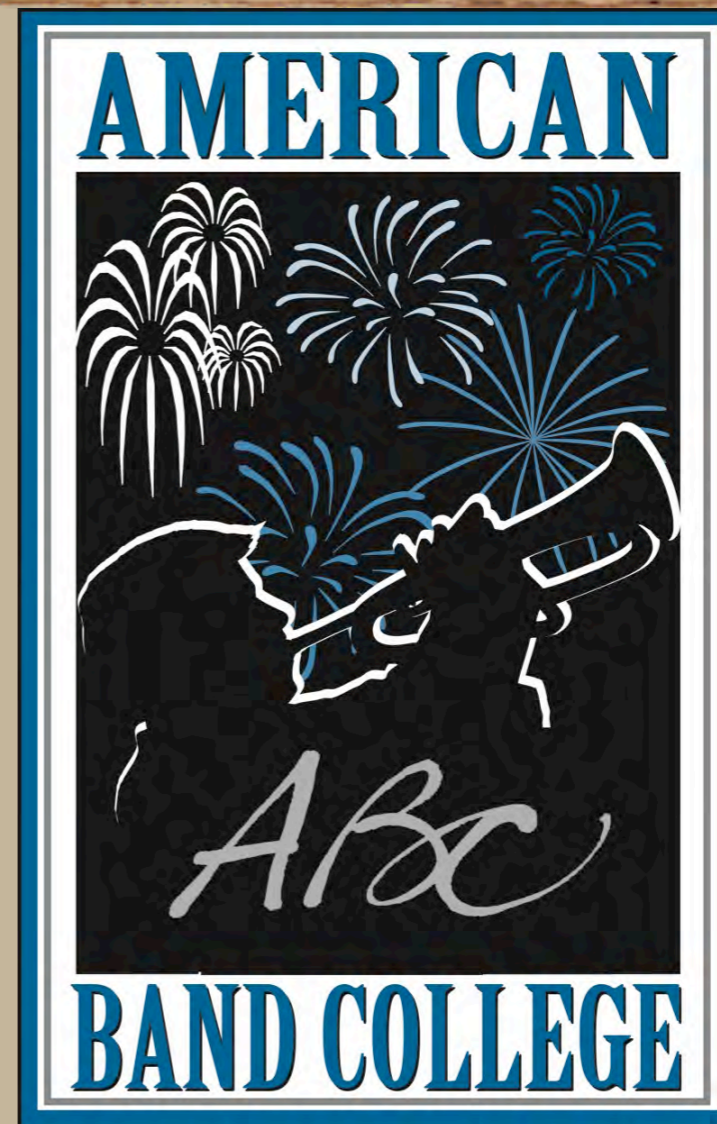
1st 2nd 3rd 4th 5th 6th 7th

# Partial to the Winds

The Power of the  
Overtone Series

Max McKee ([maxmckee@bandworld.org](mailto:maxmckee@bandworld.org))

Scott McKee ([scottmckee@bandworld.org](mailto:scottmckee@bandworld.org))



To master techniques, use The Partial Worker tools.  
To study this series, go to The ABC's of the Overtone.