



**Max McKee**  
Executive Director  
(541) 840-4888



**Scott McKee**  
Managing Director  
(541) 778-4880



**Paul Kassulke**  
Director of Operations  
(541) 778-3161

Visit us @ [www.bandworld.org](http://www.bandworld.org)

Another ABC Presentation

American Band College



*ABC's*  
of the  
Overtone Series

# Overtone Series

CHOOSE PREFERRED FINGERING

# Overtone Series

## Choosing preferred fingering

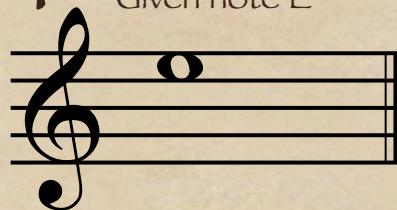
- ◆ Least number of valves,
- ◆ Unless it involves 3rd valve,
- ◆ Or is the 7th partial



# Overtone Series

## Choosing preferred fingering

Given note E



- ◆ Least number of valves,
- ◆ Unless it involves 3rd valve

**OPEN**      ~~12 or 3~~      123

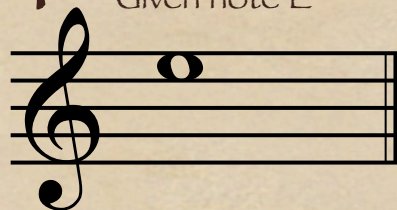
OPEN      2      1      12      23      13      #123

or 3

# Overtone Series

## Choosing preferred fingering

Given note E



- ◆ Least number of valves,
- ◆ Unless it involves 3rd valve,
- ◆ Or is the 7th partial

**OPEN**      ~~12 OR 3~~      ~~123~~

OPEN      2      1      12      23      13      ~~123~~

or 3