



Max McKee
Executive Director
(541) 840-4888



Scott McKee
Managing Director
(541) 778-4880



Paul Kassulke
Director of Operations
(541) 778-3161

Visit us @ www.bandworld.org

Another ABC Presentation

American Band College



Overtone Series

Clarinet Fingerings

Chalumeau Fingerings



|||
o

|||
o

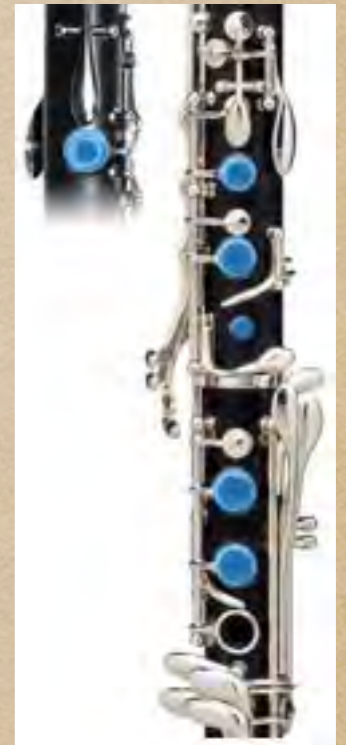
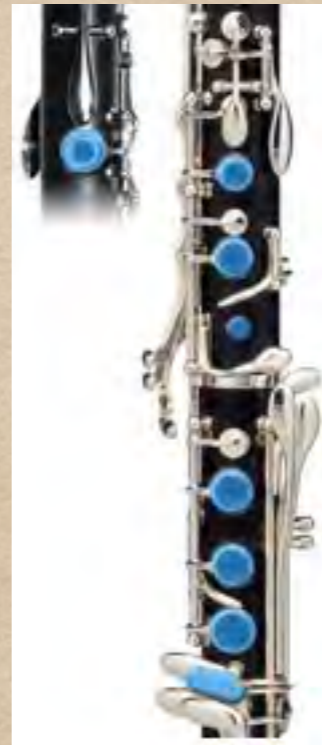
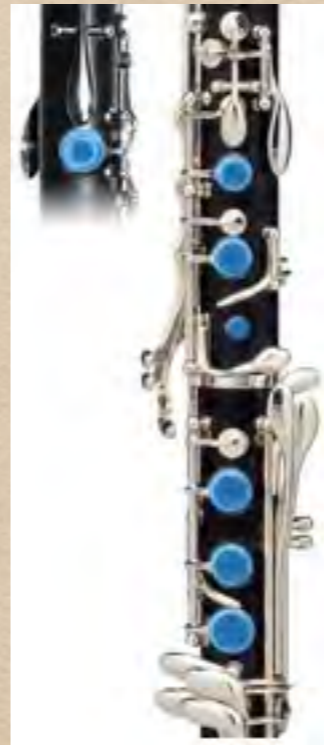
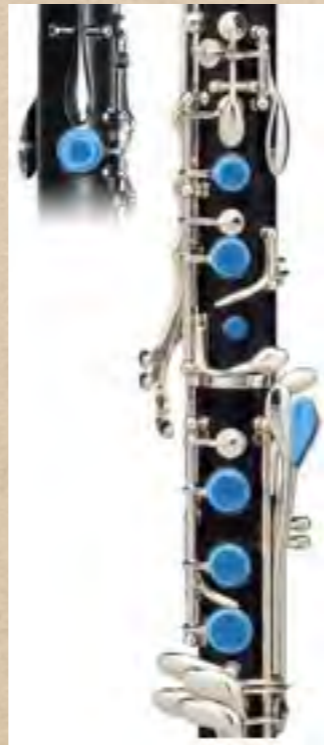
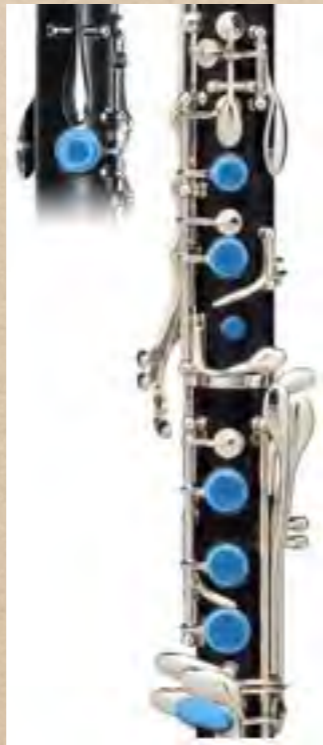
|||
#o

|||
o

|||
#o

|||
o

1ST PARTIAL

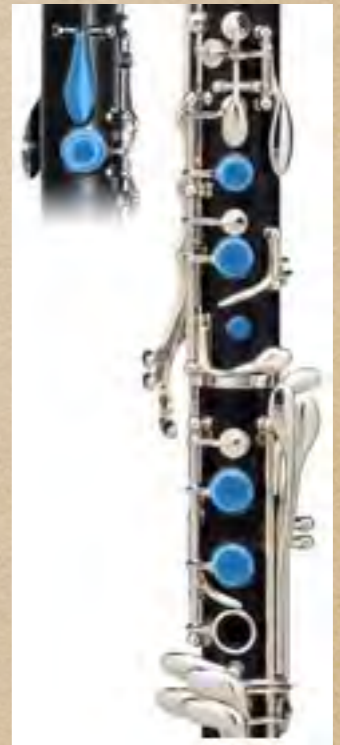
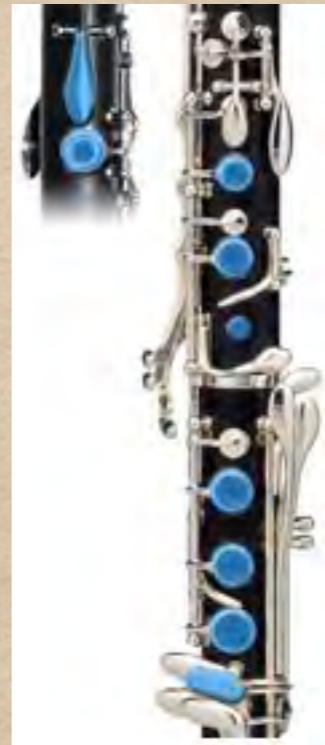
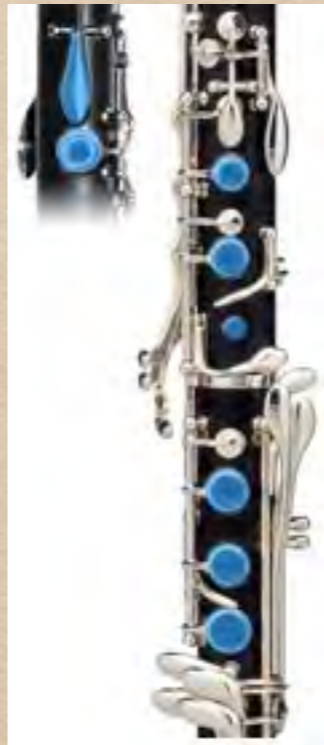
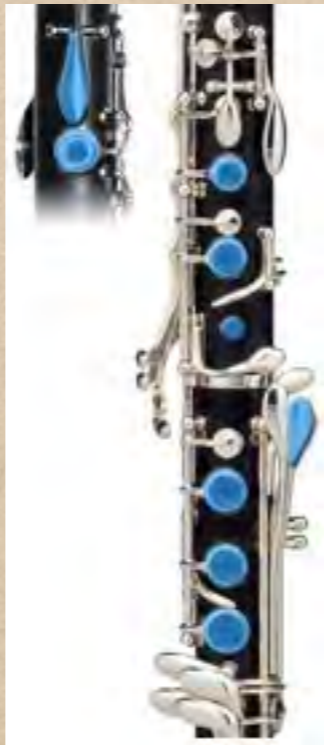
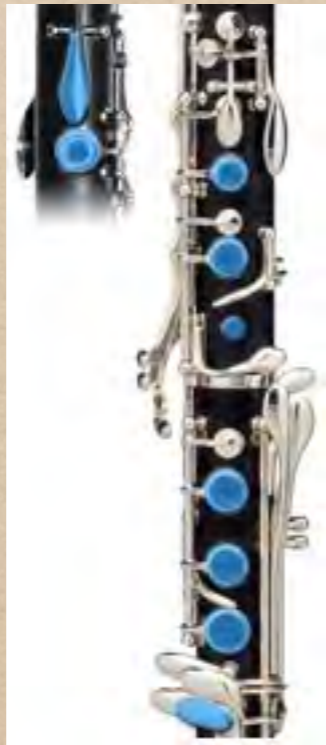


Clarion Fingerings

3RD PARTIAL

1ST PARTIAL

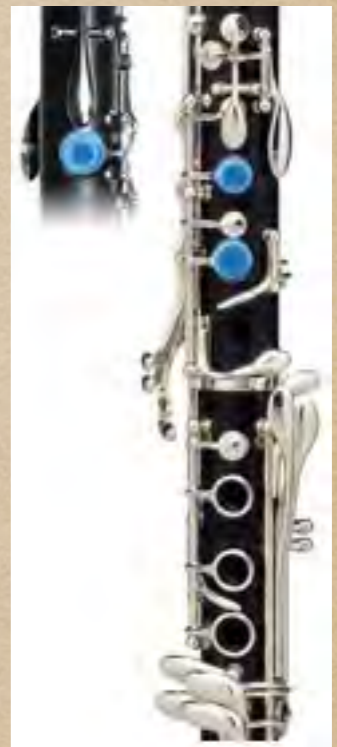
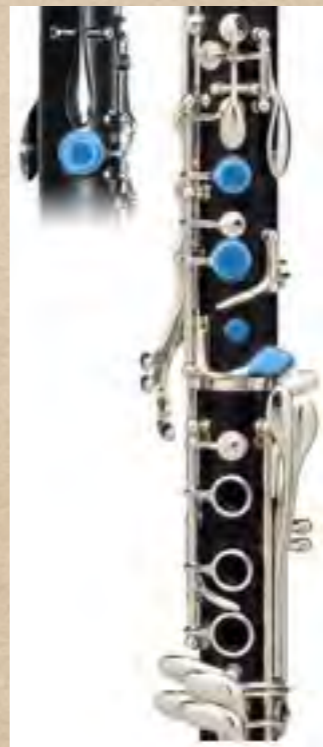
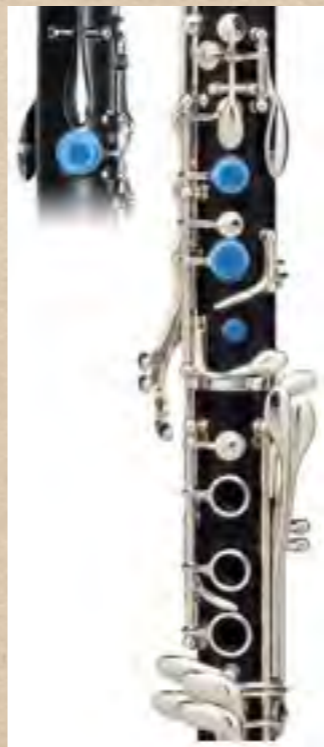
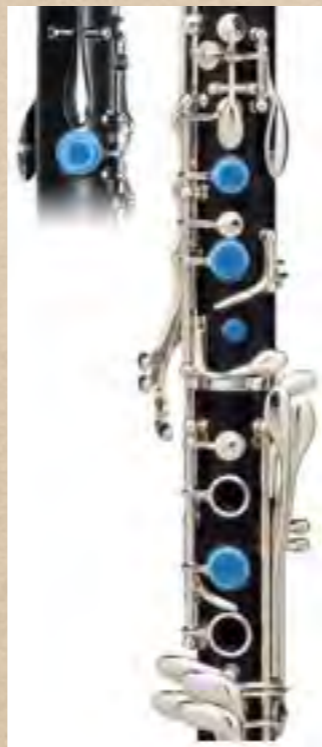
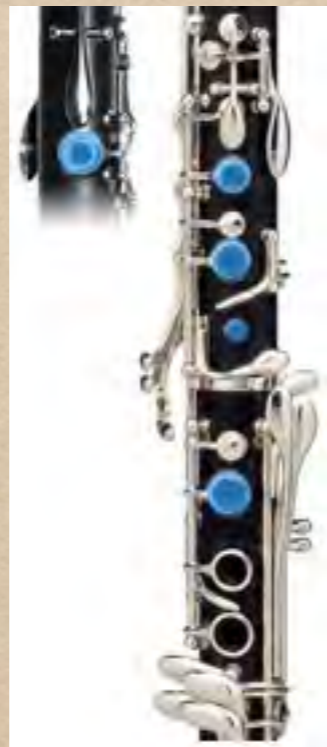
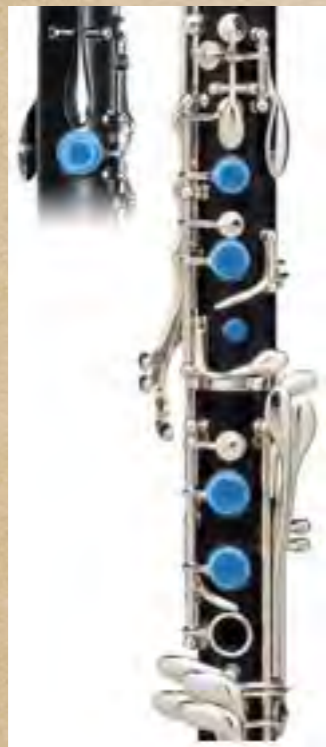
+
REGISTER
KEY



Chalumeau Fingerings



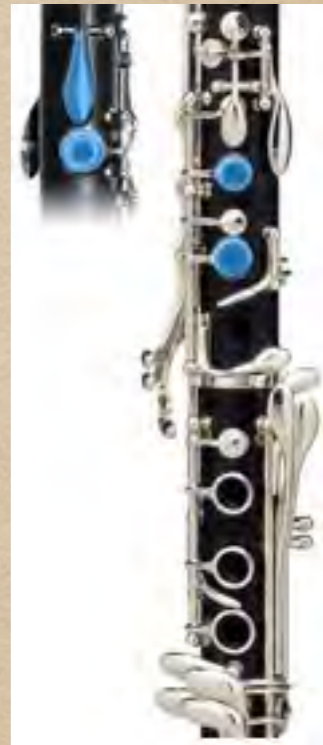
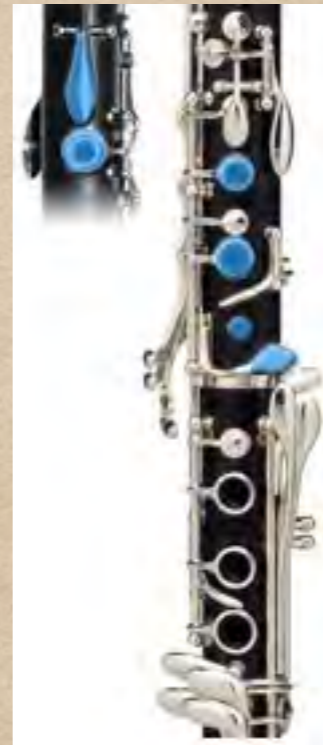
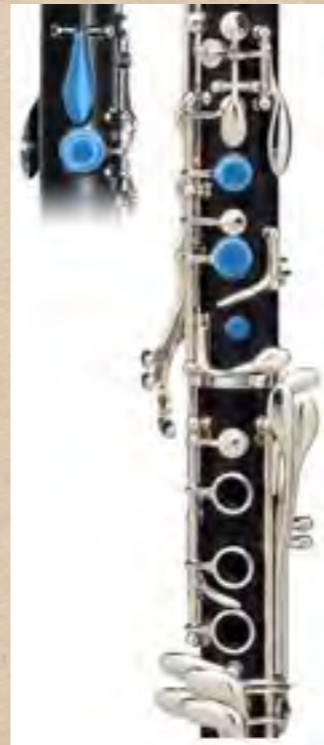
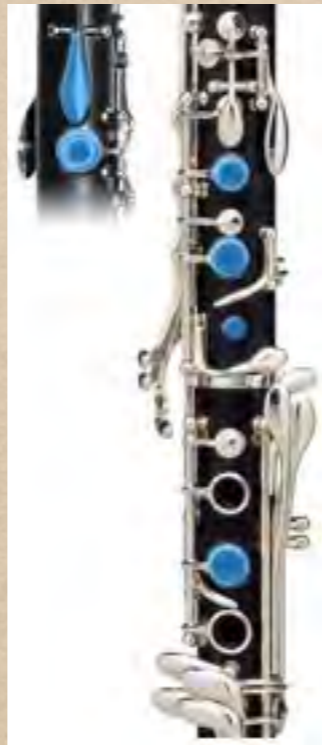
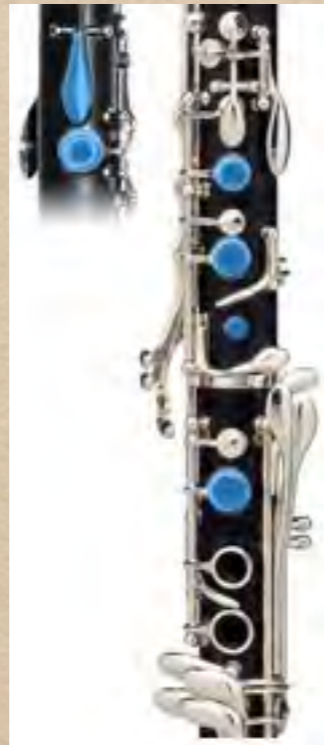
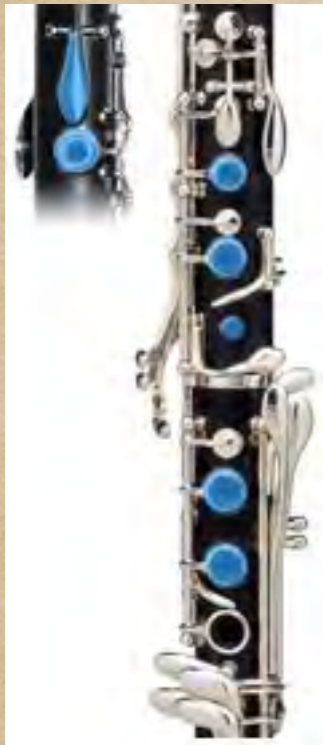
1ST PARTIAL



Clarion Fingerings

Musical notation for Clarion Fingerings, showing notes on a staff with treble and bass clefs. The notes are: C4 (treble), D4 (treble), E4 (treble, sharp), F4 (treble), G4 (treble, flat), A4 (treble, flat), B4 (treble, flat), C5 (treble, flat), D5 (treble, flat), E5 (treble, flat), F5 (treble, flat), G5 (treble, flat), A5 (treble, flat), B5 (treble, flat), C6 (treble, flat). The notes are grouped into two parts: 3RD PARTIAL (top staff) and 1ST PARTIAL (bottom staff).

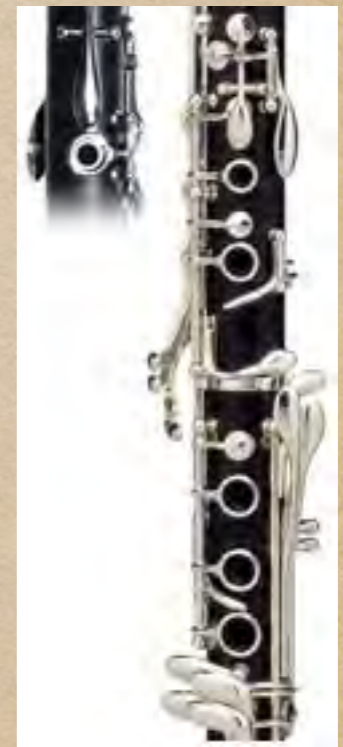
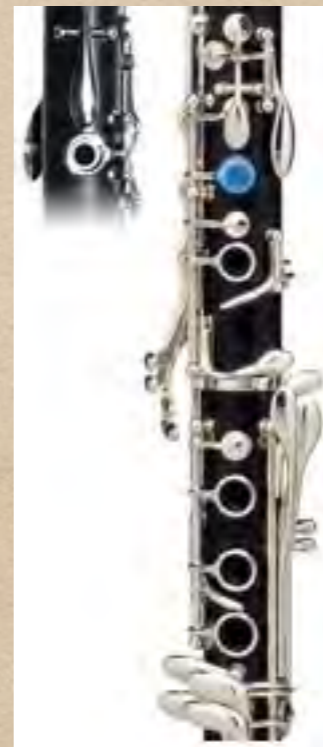
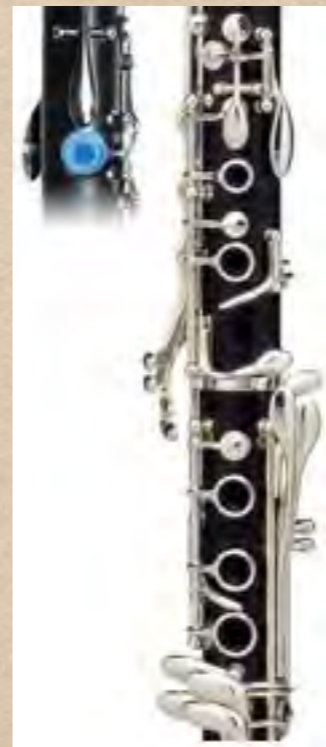
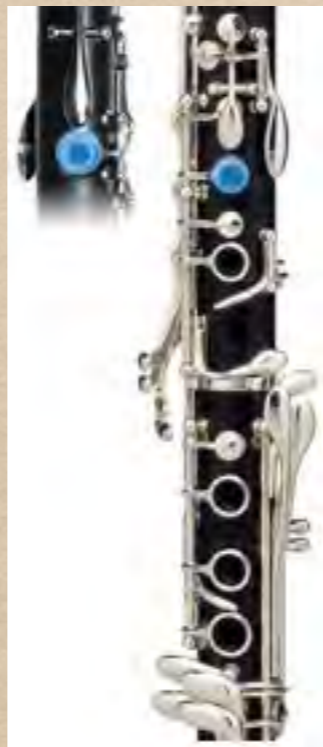
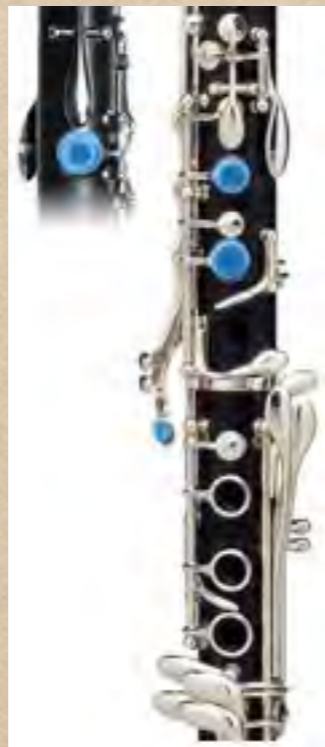
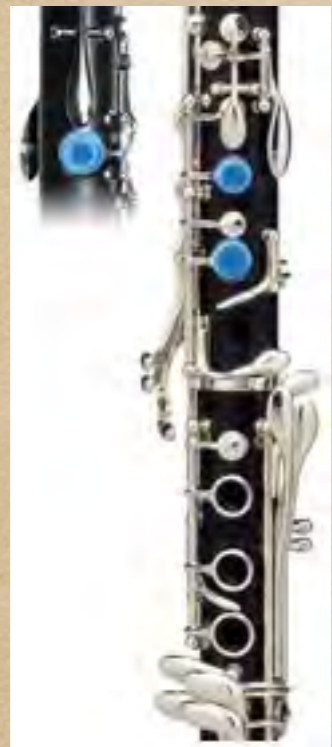
+
REGISTER
KEY



Chalumeau Fingerings



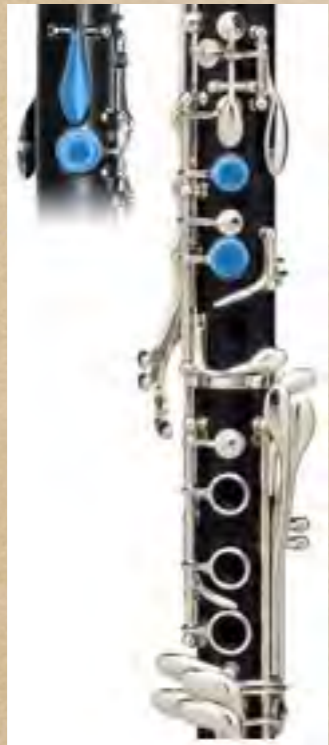
1ST PARTIAL



Clarion Fingerings

Musical notation for Clarion Fingerings, showing notes on a treble clef staff. The notes are: C4 (middle C), B3, Bb3, A3, Ab3, G3. The notes B3, Bb3, and Ab3 are marked as 3RD PARTIAL. The notes A3 and G3 are marked as 1ST PARTIAL.

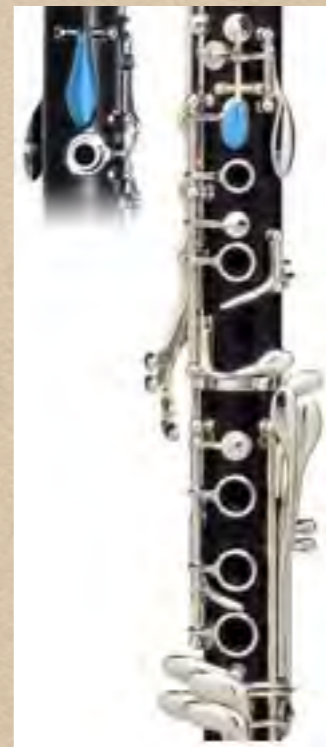
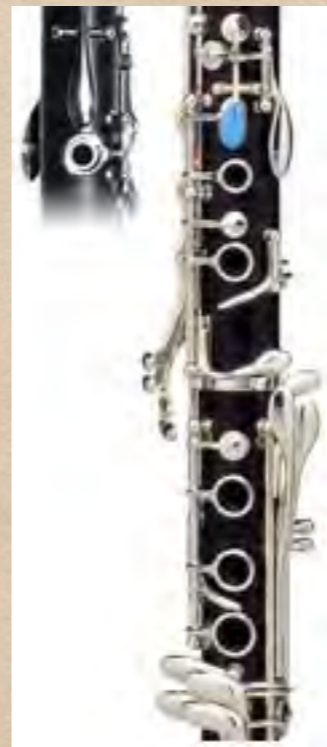
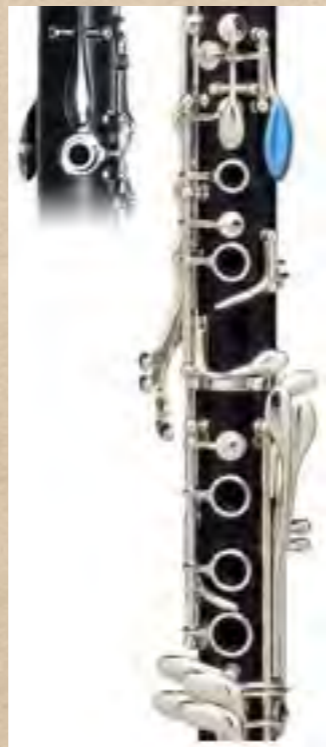
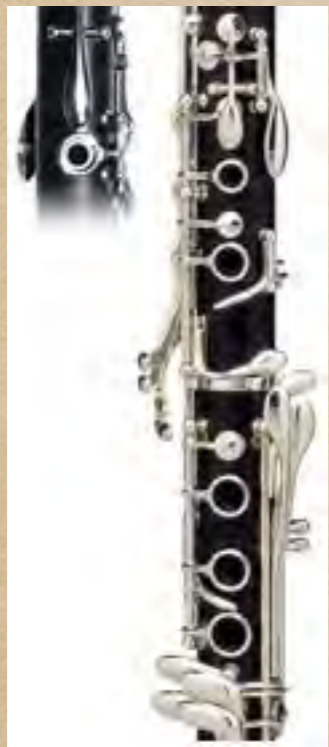
+
REGISTER
KEY



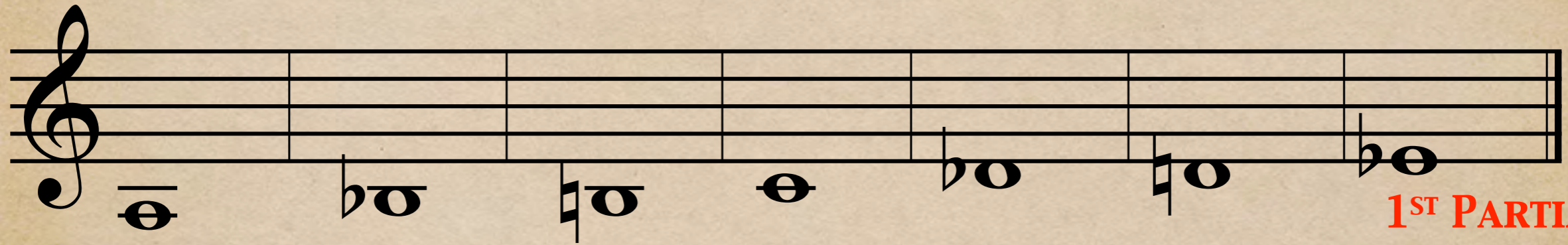
Chalumeau Fingerings



1ST PARTIAL



Chalumeau Fingerings



1ST PARTIAL



Clarion Fingerings

Musical notation for Clarion Fingerings, showing two staves. The top staff is in treble clef and the bottom staff is in bass clef. The notes are: C4, D4, E4, F4, G4, A4, B4 on the top staff; and C3, B2, A2, G2, F2, E2, D2 on the bottom staff. The notes are connected by a brace on the right side. The text "3RD PARTIAL" is written in red above the top staff, and "1ST PARTIAL" is written in red below the bottom staff.

+
REGISTER
KEY



Altissimo Fingerings

A musical staff with a treble clef and a key signature of one sharp (F#). The staff contains seven measures of music, each with a whole note. The notes are: F#5, G5, A5, B5, C6, D6, and E6. The notes are written on the top line of the staff. To the right of the staff, there are three labels in red: "5TH PARTIAL" above the first measure, "3RD PARTIAL" above the last measure, and "1ST PARTIAL" below the last measure.

+
REGISTER
KEY

- 1ST FINGER

