



Max McKee
Executive Director
(541) 840-4888



Scott McKee
Managing Director
(541) 778-4880



Paul Kassulke
Director of Operations
(541) 778-3161

Visit us @ www.bandworld.org

Another ABC Presentation

American Band College

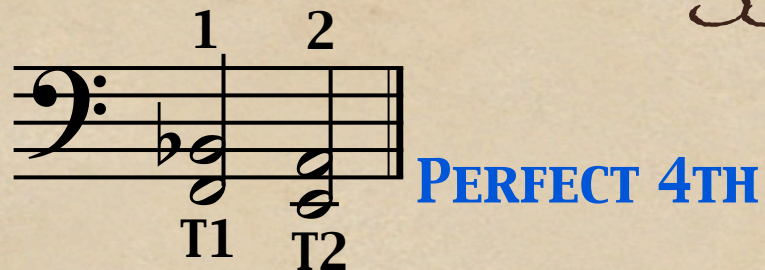


Overtone Series

TROMBONE TRIGGER (F Attachment)

Overtone Series

Use of Trombone Trigger

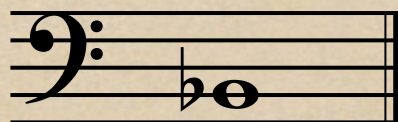


- ◆ Trigger lowers the series by a perfect 4th
- ◆ 1st position (B \flat), is now F with the trigger activated

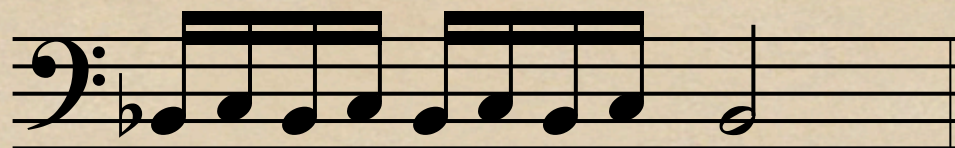


Overtone Series

Use of Trombone Trigger

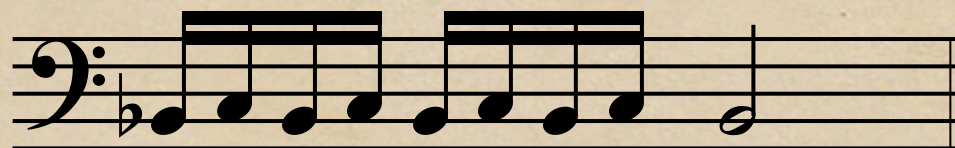


1ST
POSITION



1 6 1 6 1 6 1 6 1

WITHOUT
TRIGGER

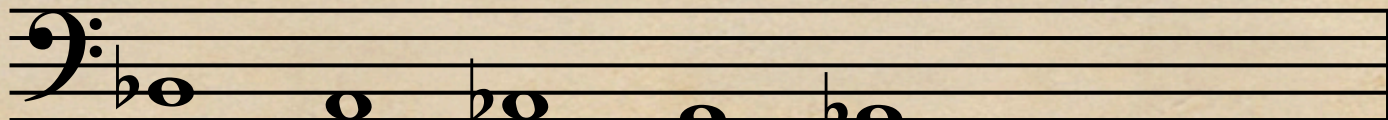


1 T1 1 T1 1 T1 1 T1 1

WITH TRIGGER

- ◆ Without an F trigger, the player must play the C in 6th position and the Bb in 1st position. Very difficult.
- ◆ With the F trigger, the player simply stays in first position!

TROMBONE



1st

2nd

3rd

4th

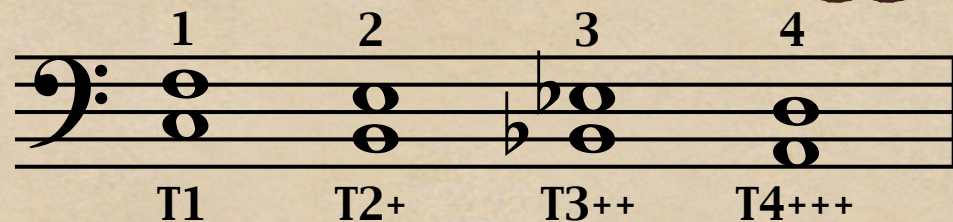
5th

6th

7th

Overtone Series

Use of Trombone Trigger



- ◆ Standard trombone positions 1st, 2nd, 3rd, and 4th, for the third partial F, E, Eb, and D shown above, become C, B, Bb and A with the trigger. Note the required lengthening of each slide position more and more (+, ++, +++) in order to play in tune.

