



**Max McKee**  
Executive Director  
(541) 840-4888



**Scott McKee**  
Managing Director  
(541) 778-4880



**Paul Kassulke**  
Director of Operations  
(541) 778-3161

Visit us @ [www.bandworld.org](http://www.bandworld.org)

Another ABC Presentation

American Band College



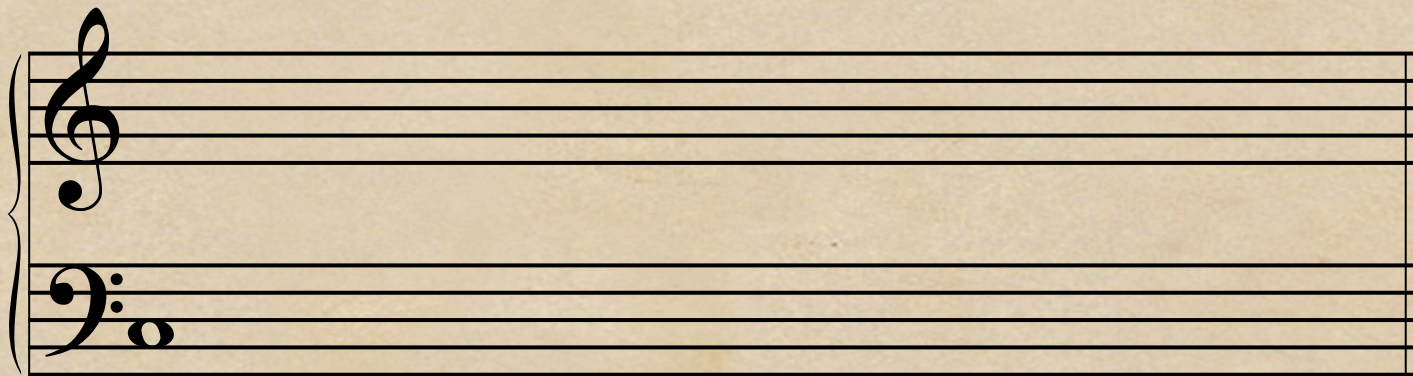


*ABC's*  
of the  
Overtone Series



# Overtone Series

## Building the Series

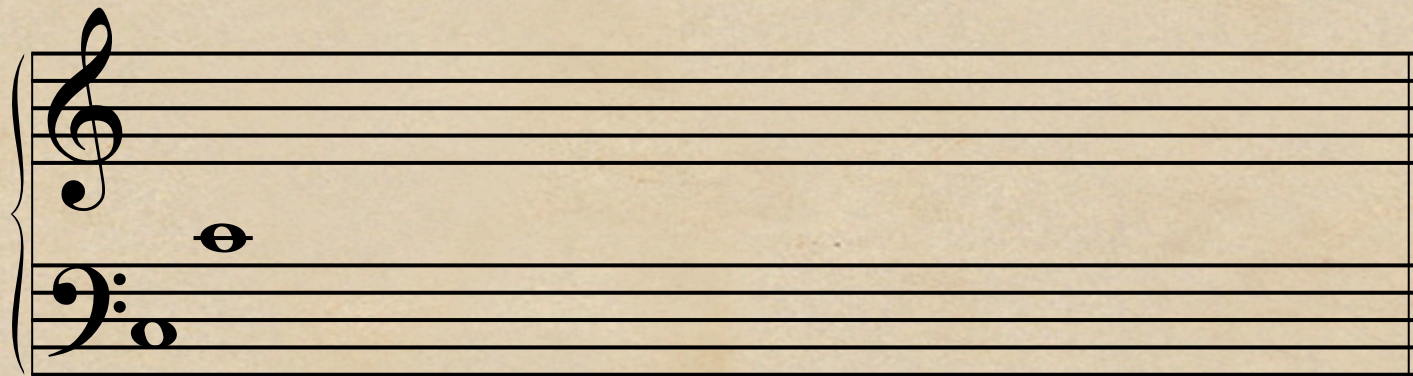


1  
Partial



# Overtone Series

## Building the Series

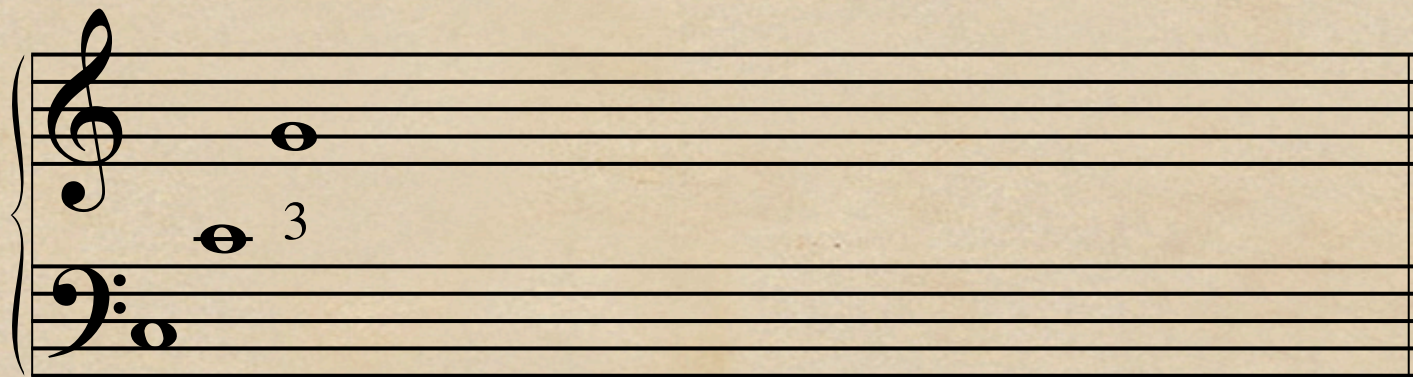


1 2  
Partial



# Overtone Series

## Building the Series

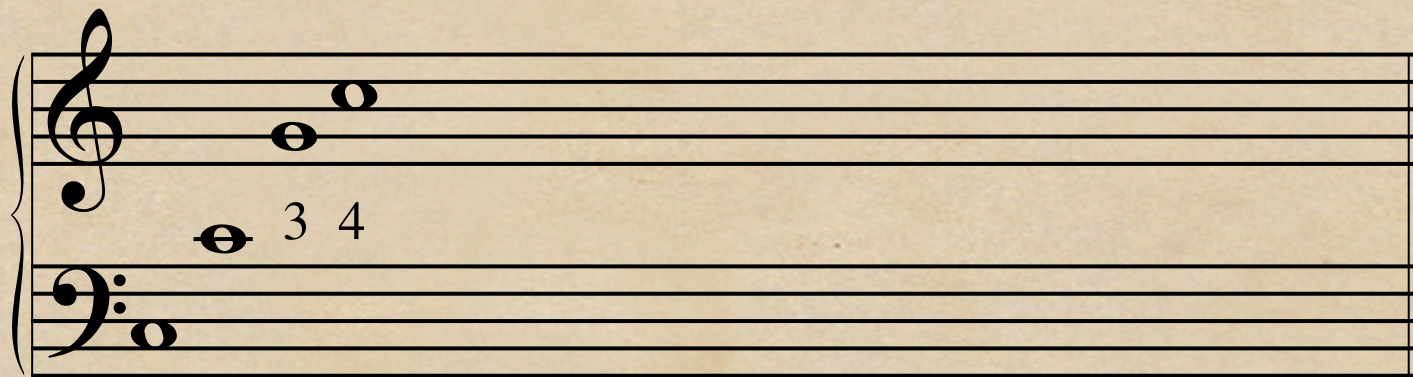


1 2  
Partial



# Overtone Series

## Building the Series

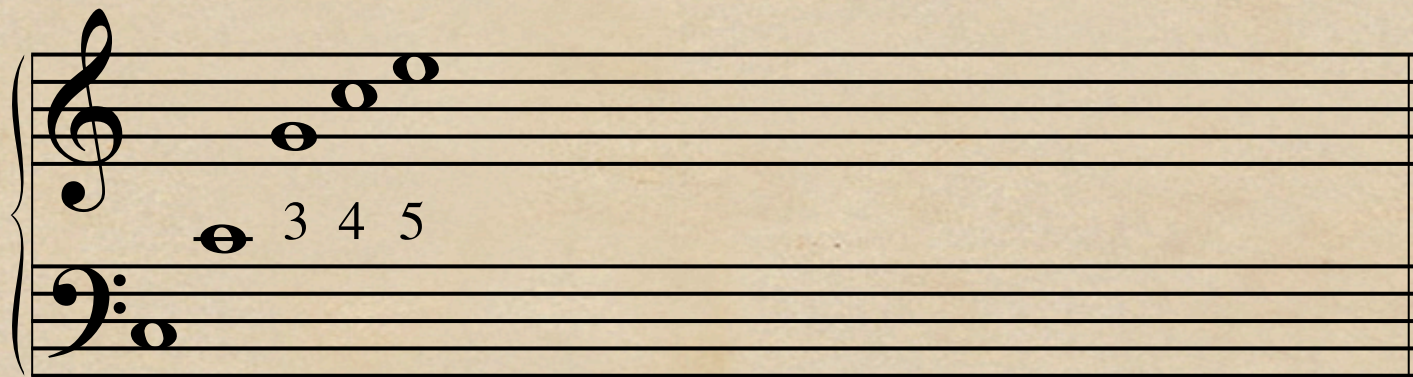


1 2  
Partial



# Overtone Series

## Building the Series

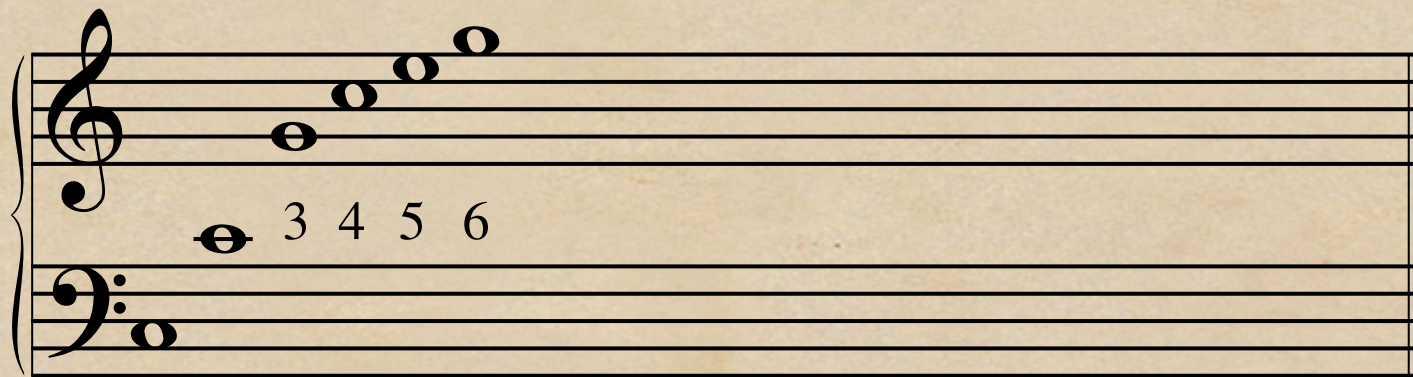


1 2  
Partial



# Overtone Series

## Building the Series

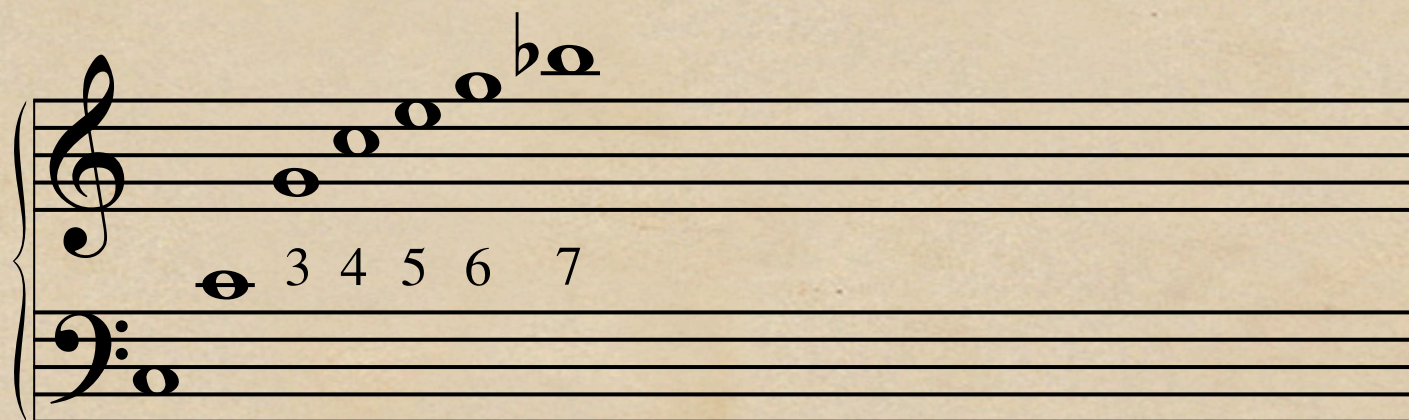


1 2  
Partial



# Overtone Series

## Building the Series

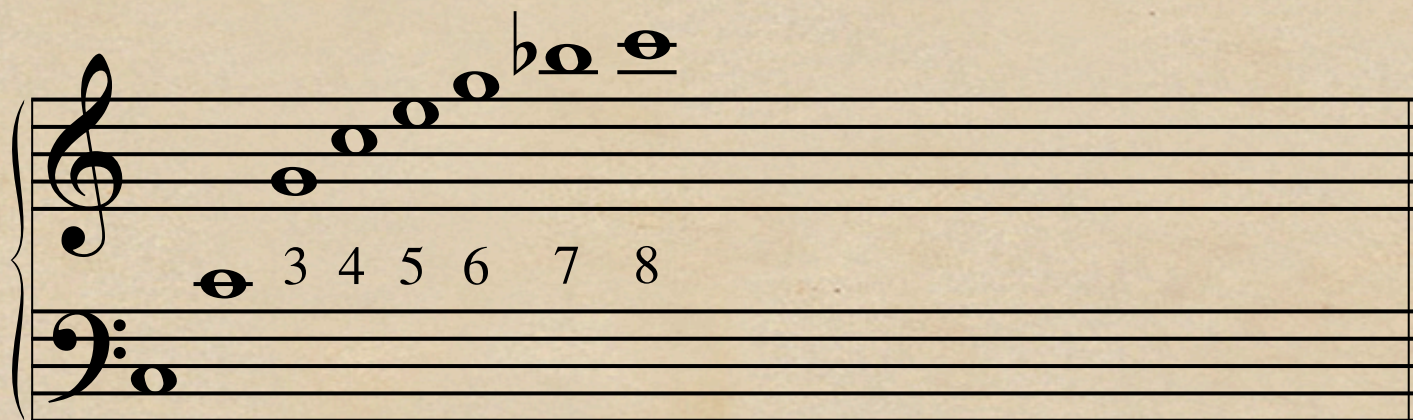


1 2  
Partial



# Overtone Series

## Building the Series



1 2  
Partial



# Overtone Series

## Building the Series

A musical staff with a grand staff (treble and bass clefs) showing an overtone series. The notes are: C2 (bass clef), C3 (bass clef), G2 (bass clef), C3 (bass clef), D3 (bass clef), E3 (bass clef), F3 (bass clef), G3 (bass clef), A3 (bass clef), B3 (bass clef), C4 (treble clef), D4 (treble clef), E4 (treble clef), F4 (treble clef), G4 (treble clef), A4 (treble clef), B4 (treble clef), C5 (treble clef). The notes are numbered 1 through 9 below the staff. The notes C4, D4, E4, and F4 are underlined.

1 2  
Partial



# Overtone Series

## Building the Series

A musical score on a grand staff (treble and bass clefs) illustrating the first ten partials of an overtone series. The notes are: 1 (C2), 2 (C3), 3 (G2), 4 (F2), 5 (E2), 6 (D2), 7 (Bb1), 8 (Bb1), 9 (A1), and 10 (A1). The notes are placed on the staff lines as follows: 1 on the first line of the bass clef, 2 on the first space of the bass clef, 3 on the second space of the bass clef, 4 on the second line of the bass clef, 5 on the second space of the bass clef, 6 on the second line of the bass clef, 7 on the first space of the treble clef, 8 on the first space of the treble clef, 9 on the first line of the treble clef, and 10 on the first line of the treble clef. The notes are marked with partial numbers 1 through 10 below the staff.

1 2  
Partial



# Overtone Series

## Building the Series

A musical staff with a grand staff (treble and bass clefs) showing an overtone series. The notes are: C2 (bass clef), C3 (bass clef), G2 (bass clef), C3 (bass clef), D3 (bass clef), E3 (bass clef), F3 (bass clef), G3 (bass clef), A3 (bass clef), B3 (bass clef), C4 (treble clef), D4 (treble clef), E4 (treble clef), F4 (treble clef), G4 (treble clef), A4 (treble clef), B4 (treble clef), C5 (treble clef). The notes are numbered 1 through 11 below the staff. The notes are: 1 (C2), 2 (C3), 3 (G2), 4 (C3), 5 (D3), 6 (E3), 7 (F3), 8 (G3), 9 (A3), 10 (B3), 11 (C4). The notes are: 1 (C2), 2 (C3), 3 (G2), 4 (C3), 5 (D3), 6 (E3), 7 (F3), 8 (G3), 9 (A3), 10 (B3), 11 (C4).

1 2  
Partial



# Overtone Series

## Building the Series

A musical score on a grand staff (treble and bass clefs) illustrating the first 12 partials of an overtone series. The notes are: 1 (C2), 2 (C3), 3 (G2), 4 (C3), 5 (E3), 6 (F3), 7 (G3), 8 (A3), 9 (B3), 10 (C4), 11 (D4), 12 (E4). The notes are placed on the staff lines as follows: 1 on the first line of the bass clef, 2 on the first space, 3 on the second line, 4 on the second space, 5 on the third line, 6 on the third space, 7 on the fourth line, 8 on the fourth space, 9 on the fifth line, 10 on the first line of the treble clef, 11 on the first space, and 12 on the second line. The notes are marked with accidentals: 7 has a flat, 11 has a sharp, and 12 has a natural sign.

1 2  
Partial