

Doodling Exercise

Two staves of musical notation in 12/8 time. The first staff features a continuous eighth-note pattern with a key signature change to one flat. The second staff features a continuous sixteenth-note pattern with a key signature change to one flat.

Accelerated Doodling Exercises

Three staves of musical notation in 3/4 time, featuring triplets. The first staff has a triplet of eighth notes followed by a quarter rest. The second and third staves show more complex triplet patterns, including eighth and sixteenth notes.

“fingeringLessfingering chart”

Two staves of musical notation. The left staff is labeled 'L.H.' and the right staff is labeled 'R.H.'. The notation shows a sequence of notes with stems pointing up and down, representing fingerings for the left and right hands.

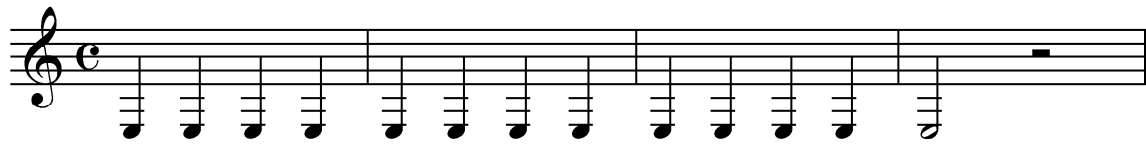
Slur thumb f to Low F; then push register key to 3rd space c, and lift fingers one at a time to slur to high c.

“Chalumeaudoodles”

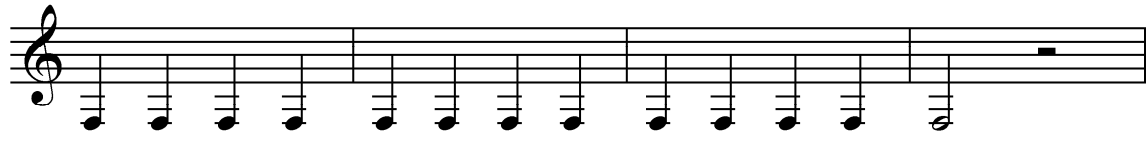


First L R L L R L etc.
 Then R L R R L R etc.

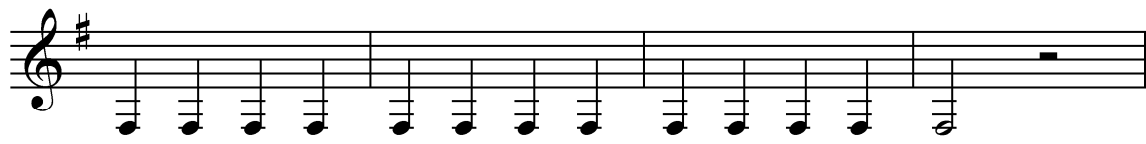
“Holding Pattern”



L R L L L R L L etc.
 R R R R



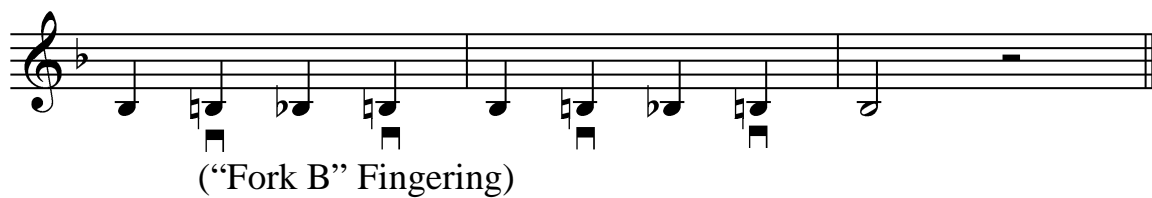
L R L L L R L L etc.
 R R R R



L R L L L R L L etc.
 R R R R

Start with both left & right fingering simultaneously, and sustain note while alternately lifting left or right fingers.

“Mystery Notes”



Preludes to "Crossing the Break"



N.B. This one is difficult to access if L.H. index finger is out of position

"Twilight Zone"

"Register Connector"



“Chromatic Puzzle Pieces”

First Octave

The first octave section consists of three staves of music. Each staff begins with a treble clef and a common time signature (C). The music is composed of eighth notes and rests, with trills indicated by a '3' above the notes. The first staff contains four measures, the second staff contains two measures, and the third staff contains three measures. The notes are chromatic, moving stepwise up and down the scale.

Second Octave

The second octave section consists of three staves of music. Each staff begins with a treble clef and a common time signature (C). The music is composed of eighth notes and rests, with trills indicated by a '3' above the notes. The first staff contains four measures, the second staff contains two measures, and the third staff contains three measures. The notes are chromatic, moving stepwise up and down the scale.

Third Octave



Three staves of musical notation for a third octave exercise. Each staff contains a sequence of notes with trills (marked with a '3') and rests. The notes are primarily eighth and sixteenth notes, with some quarter notes. The key signature is one sharp (F#).

Middle Octave – Throat Keys Downward



A single staff of musical notation for a middle octave exercise. It features a sequence of notes with trills (marked with a '3') and rests, moving downward in pitch. The notes are eighth and sixteenth notes, with some quarter notes. The key signature is one flat (Bb).

Practice also in note groups of 7 and 13 as above exercises.

Chromatic Scale



Two staves of musical notation for a chromatic scale exercise. The first staff shows a sequence of notes with trills (marked with a '3') and rests, moving upward in pitch. The second staff shows a sequence of notes with trills (marked with a '3') and rests, moving downward in pitch. The notes are eighth and sixteenth notes, with some quarter notes. The key signature is one flat (Bb).